



# MAP TO PRESTONSBURG

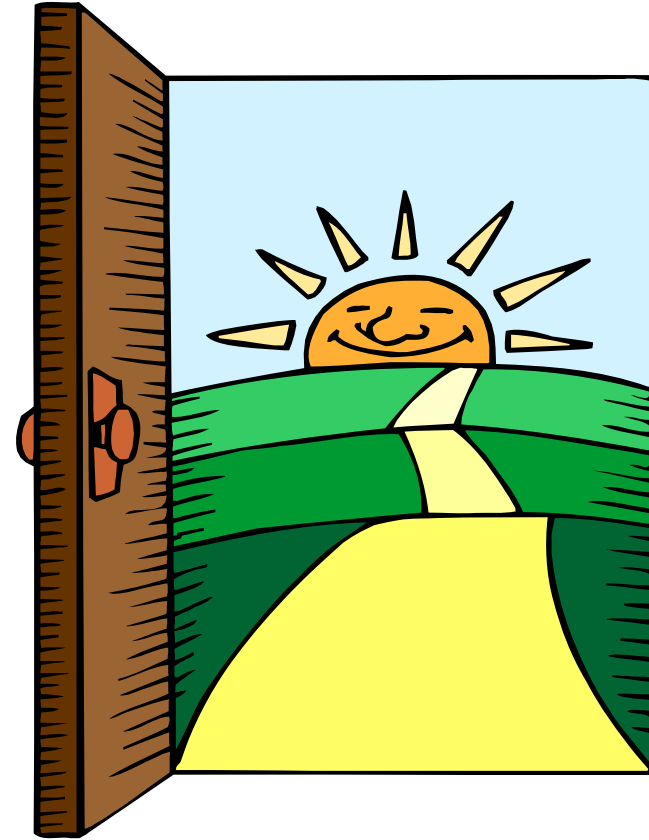
# Mountain Comprehensive Care Center

# RIVERSIDE



## DIRECTIONS TO RIVERSIDE

104 South Front Avenue,  
Prestonsburg, KY. A secluded red brick house with a large parking area and gazebo.



Phone: 606-886-4408

Fax: 606-886-0829

E-Mail:

[KStiltner@mtcomp.org](mailto:KStiltner@mtcomp.org)

HELP-LINE

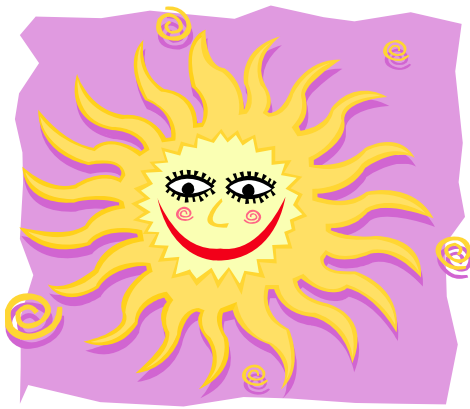
1-800-422-1060



**MISSION:** To provide a safe and comfortable environment which assures individuals an opportunity to achieve stability.

104 South Front Avenue - Prestonsburg, Kentucky 41653





Riverside is an eight bed facility. The Unit is open 24 hours - 7 days a week and is available to both men and women. The Unit is designed to provide short term intervention, and is available to those individuals who are at risk of psychiatric hospitalization and without intervention would require such hospitalization.

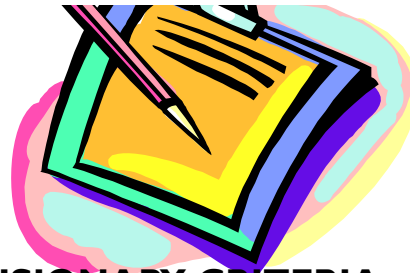
### SERVICES PROVIDED:

- © Assessment and Evaluation
- © Service/Treatment Planning
- © Crisis Intervention
- © Discharge Planning and Linkages with Community Resources
- © Skill Building Activities
- © Individual and Group Intervention
- © Psychoeducation (e.g., symptom

### ADMISSION CRITERIA:

The Individual shall be:

- ◆ Voluntarily willing for services
- ◆ Age 18 or over
- ◆ Medically Stable
- ◆ Able to perform activities of daily living
- ◆ Able to contract for safety
- ◆ Experiencing acute symptoms of mental illness, which it is thought will decrease in severity under continuous supervision in a safe clinical environment
- ◆ At risk of psychiatric hospitalization, but does not meet the criteria for involuntary hospitalization
- ◆ Ready to be discharged from a hospital psychiatric unit as a stepdown



### EXCLUSIONARY CRITERIA:

If the Individual:

- Needs housing services only
- Has a history of violent behavior
- Homicide or attempted homicide
- Arson within the last 5 years
- Sexual Assault



### ACTIVITIES:

- ★ Persons attending are expected to participate in daily maintenance of the facility (Making bed, vacuuming, washing dishes, etc).
- ★ Persons attending are expected to maintain daily personal hygiene.
- ★ Persons attending are expected to participate in group meetings, unless otherwise directed.

### BE SURE TO BRING WITH YOU:

- All medications in correct containers
- Day and Night clothing
- Cigarettes, if you smoke
- Change for pop machine, etc.
- Toothbrush and paste
- Personal items

### VISITATION HOURS ARE:

Monday-Friday : 6 p.m. - 8 p.m.  
Saturday & Sunday : 1 p.m. - 5 p.m.

**Visitors under the age of 13 require prior staff approval.**